



# Operating Manual Supplement

## For SD tensioner

*Only applicable to part nos. 69883, 70209, 70395, and 78162*

- A) Replacement draw nut
- B) Replacement rotating sleeve



### **ATTENTION:**

**When replacing the draw nuts and rotating sleeves, make sure the parts are clean and undamaged!**

Required material/tools:

- Hexagon socket screwdriver AF4
- Lubricating grease (e.g. Mobiltemp SHC 100 or similar)
- Eye bolts M8 + M10 (2 pcs each)
- Slings / lifting gear

## A) Replacing the draw nut

### 1. Take out the draw nut

You can remove the draw nut from the tensioner without the help of tools.

To complete this step, you need to screw the M8 eye bolts into the draw nut.

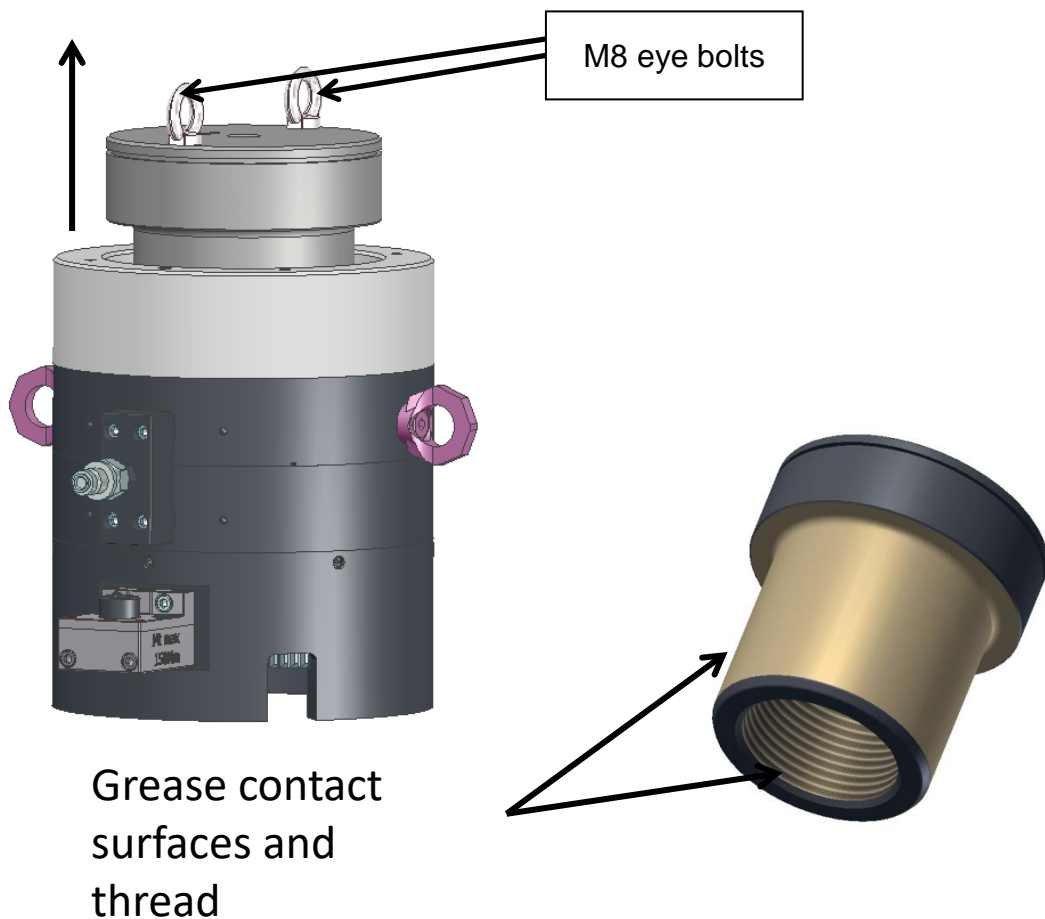
Please take the weight of the draw nut into account.

Depending on its size, you may have to use lifting gear.

### 2. Insert the new draw nut

You need to check if the draw nuts are clean before installing them. Thread and contact surfaces need to be greased.

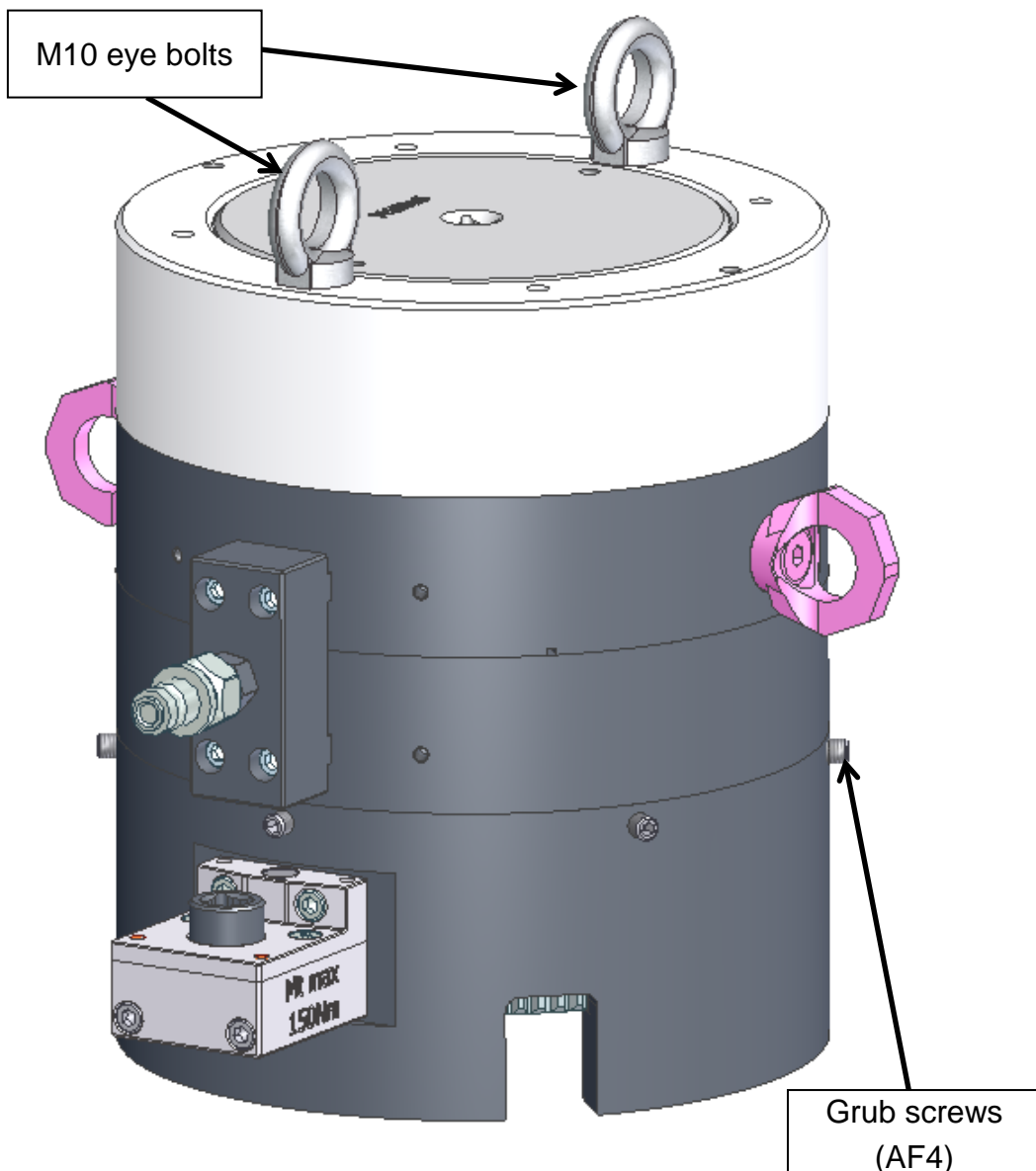
### 3. Remove the M8 eye bolts again



## B) Replacing the rotating sleeve

**ATTENTION!**  
**Do not use the eye bolts on the sides to lift the hydraulic unit.**  
**Unstable centre of gravity!**

1. Screw the M10 eye bolts into the cover.
2. Loosen all grub screws by 5-6 turns (AF4)

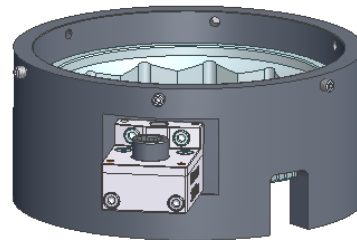
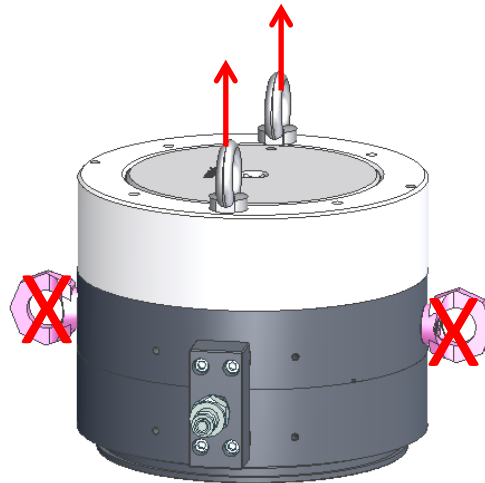


3. Lift and set down the hydraulic unit to the side using suitable slings

**ATTENTION!**

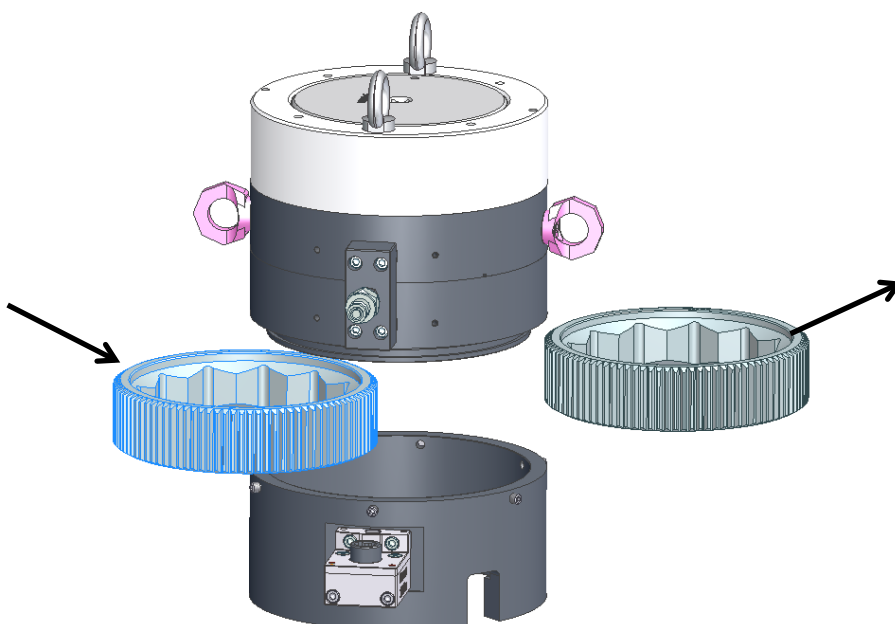
**Do not use the eye bolts  
on the sides to lift the  
hydraulic unit.**

**Unstable centre of  
gravity!**

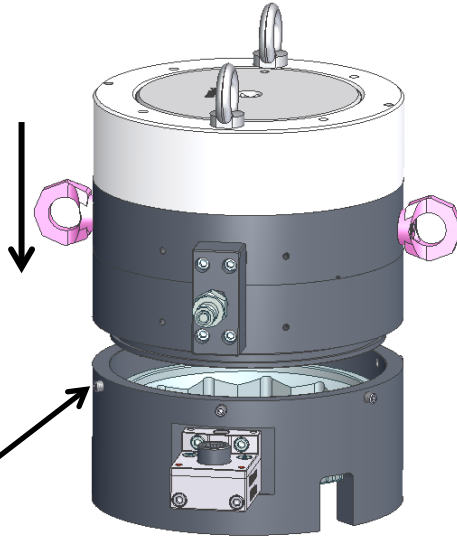


4. Replace the rotating sleeve

You need to check if the rotating sleeves are clean before installing them.  
The tothing needs to be greased.



5. Place the hydraulic unit and screw the grub screws back in



Screw in all grub screws as far as they will go before loosening them again by 1/4 turn (AF4)

6. Remove the M10 eye bolts from the cover

**ATTENTION:**  
**Operating state WITHOUT M8 and M10 eye bolts in the cover**





... a successful  
connection!

Maschinenfabrik Wagner GmbH & Co. KG  
Birrenbachshöhe · 53804 Much · Germany

**Phone national:** (02245) 62-0

**Fax national:** (02245) 62-22

**Phone international:** +49 (0)2245 62-10

**Fax international:** +49 (0)2245 62-22

info@plarad.com · www.plarad.com

2\_BA-Zusatz\_SD-Sonder\_GBR\_V4.0\_79268

Reproduction and copying of this volume, in whole or in part, is permissible only with express written permission. Subject to amendment. We take no responsibility for printing errors or inaccurate information.